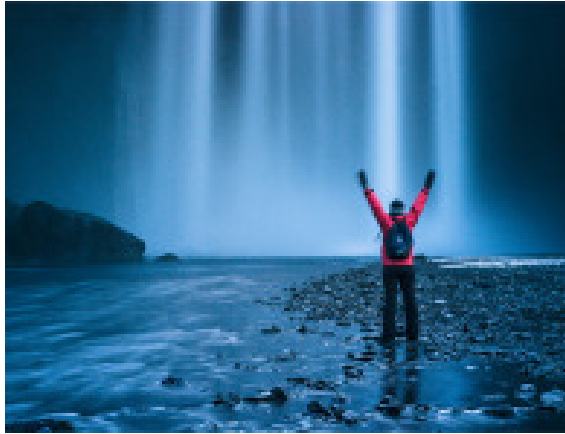


# Iceland



Adventure.com

## Guided Iceland Circle



8 Days/7 Nights  
Experience Iceland's  
Vastness-2018

Round the country in 8 days/ 7 nights

Visit two national parks, several small museums, lots of natural sights

Lava, hot springs, waterfalls, glaciers and Icelandic horses

Good hotels in scenic locations, average of 172 miles a day on comfortable coach

Weekly departures all year round

Explore the island of fire and ice and travel with an international group on Iceland's ring road. Discover stunning scenery and dramatic landscapes. A local expert guide helps you explore the unspoiled Icelandic countryside with volcanoes, lava fields, hot springs, mountains, fjords, glaciers and waterfalls. All this, all year long. Choose between midnight sun and northern lights

### Day 0: Thursday or Monday

Leave the US on an overnight flight from your Icelandair gateway, and hopefully sleep before your early morning arrival at Keflavik Airport

### Day 1: Friday or Tuesday

#### Welcome to Iceland

Land at Keflavik Airport and take the Flybus shuttle bus to Reykjavik, where you will spend the night at the Icelandair Hotel Natura in Reykjavik. We will provide you with ideas about exploring Iceland's capital on your own. Dinner suggestions as well!

### Day 2: Saturday or Wednesday

#### Volcano Crater, Seals, Fjords and Mountains (425 km/264 mls)

Meet your tour guide then head north and west through spectacular landscape. Stop in West Iceland to climb the Grábrók volcano crater. In the afternoon visit the seal museum in a small fishing village in Northwest Iceland then stop at the turf church of Viðimýri widely considered one of the purest and most beautiful examples of traditional Icelandic architecture. Continuing along scenic fjord landscape and over several impressive mountain passes you will soon reach Akureyri, the capital of North Iceland where you'll spend the night at the Icelandair Hotel Akureyri.

### Day 3: Sunday or Thursday

#### The Capital of North Iceland, Lake Myvatn and Geothermal Baths (120 km/75 mls)

There's time to explore Akureyri this morning. This charming town of 17000 inhabitants has a wonderful botanical garden and panoramic views over Eyjafjörður. Further east you'll visit one Goðafoss, the waterfalls of the Gods. Then on to Lake Mývatn, known for its geological wonders and active bird life during summer. Visit the bizarre lava formations at Kálfaströnd walk around the many pseudo craters, and then soak off the day at Mývatn Nature Baths with its unique blend of minerals, silicates and geothermal micro-organisms. Spend the night at the Sel-Hotel Myvatn or in Husavik.



Iceland Adventure, LLC Toll free 888 686-6784 Email: [hn@icelandadventure.com](mailto:hn@icelandadventure.com)

**Day 4: Monday or Friday**  
**Lava Labyrinth, Hot Springs and**  
**Travel to the East (250 km/155 mls)**

A hike in the lava labyrinth at Dimmuborgir “the dark castles”, starts the day – perhaps you’ll get a glimpse of the trolls who are said to live there. There’s an optional lunch then visit the hot spring area of Námaskarð with bubbling mud pools and steaming solfataras. As you travel through the uninhabited highlands to East Iceland, you might be lucky enough to spot an Arctic fox or reindeer. From June to August the tour includes a detour to Dettifoss, Europe’s most powerful waterfall in the northern part of Vatnajökull National Park. Overnight is at Icelandair Hotel Hérað or Álheimar Guesthouse in Borgarfjörður-Eystri..

**Day 5: Tuesday or Saturday**  
**Fjords, a Glacier and Ice**  
**(470 km/292 mls)**

Today, admire the dramatic fjord landscape and the tiny fishing villages at the end of twisty roads in the East Fjords and with a stop at an interesting stone and mineral collection along the way. In the afternoon you’ll start to see Vatnajökull – Europe’s biggest glacier that is visible all over Southeast Iceland. South of Höfn, is Jökulsárlón, a glacial lagoon filled with floating icebergs, black sandy beaches where large icebergs get stranded and where you might see seals swimming in arctic waters. Depending on the season, optional boat trips through the lagoon are available. Then you’ll travel along the southern edge of Vatnajökull and spend time at Europe’s largest national park, which has Iceland’s highest mountains, an alpine environment, and Europe’s largest glacier. Spend the night at the Icelandair Hotel Kirkjubæjarklaustur or Hotel Höfn.



**Day 6: Wednesday or Sunday**  
**The South Coast**  
**(240 km/149 mls)**

A beautiful drive with many natural wonders awaits you heading across the Eldhraun lava field, across the sandy desert of the south coast, overlooked by mountainous cliffs, glaciers and waterfalls. There will be a stroll along the black lava beach of Reynisfjara near Vík. You’ll visit the small village of Skógar home of one of the most impressive waterfalls in the country, Skógafoss waterfall which is 60 meters high. Visit Eyjafjallajökull Information Center to learn about life around glaciers and an active volcano. Continue to the high but narrow Seljalandsfoss waterfall which plunges over the mountain. There is an interesting trail that goes behind the fall – if you are prepared to get wet! Spend the night at Icelandair Hotel Flúðir or Hotel Eyjafjallajökull or Hotel Fljótshlíð.

**Day 7: Thursday or Monday**  
**Icelandic Horses and the Golden**  
**Circle (160 km/99 mls)**

Iceland’s classics are yours today as you visit the Golden Circle sights. The day starts at Friðheimar, where you learn about the special qualities of the Icelandic horse, and visit a geothermal greenhouse. Walk among the hot springs and bubbling pools at the Geysir geothermal fields then on to Gullfoss, “the golden falls”, a double waterfall that tumbles 34 meters into the Hvita River. Enjoy south Iceland traveling to Thingvellir National Park, a UNESCO World Heritage site, ancient home of Iceland’s parliament. Soon you’ll be back in Reykjavík, for a short city tour of highlights of the world’s northernmost capital. Spend your last night at the Icelandair Hotel Natura – and perhaps take the opportunity to sample some of Reykjavík’s great restaurants and legendary night life.

**Day 8: Friday or Tuesday**  
**Leave for Home**

You may have the morning free to relax shop, enjoy the swimming pools or perhaps schedule a visit to the Blue Lagoon before heading to Keflavik Airport for your flight back home.

# Guided Iceland Circle 2018

**.DAILY DRIVING:** Total mileage without airport transfer is 1.665 km (1.032 miles) which is an average of 278 km (172 miles) per day. You spend about 4 hours per day on the bus, depending on road conditions, traffic and daily distances.

**NOTE:** Occasionally between September and May, the itinerary might need to be changed, should weather conditions not allow the scheduled route, and certain outdoor activities might be cancelled or changed. In this case, GJ-Travel will try to find reasonable alternatives where and whenever possible, but no refunds will be forthcoming.

*Please note that the price is subject to revision until you book your tour by making a deposit. Air prices are very vulnerable to timing - we can sometimes get great deals, or seats may require a surcharge if it's a late booking. The prices listed on print material may not be the latest price.*

## Dates and Rates

This 8 day/7 night tour starts in Iceland every Friday, and Tuesday year round. Travelers need to depart the US no later than the Thursday before. Prices are listed by season, but those may vary depending on flight seats. Booking your tour earlier will always bring you the best possible price. This tour has a maximum group size of 30 travelers, and some departures have less than that.

**Price includes** round trip flights from Icelandair east coast gateways – New York, Newark, Boston, Philadelphia, Washington Dulles, and MCO Orlando - airport transfers, 6 day coach tour with guide, 7 nights accommodations with private bath, breakfast every day, natural history & seal museum in Hvammstangi, Viðimýri turf church, Mývatn Nature Baths, Petra's Stone and Mineral Collection, at Eyjafjallajökull Volcano Information Center, Icelandic horse stables & geothermal greenhouse, Use of snow & ice gripper spikes and a flash light for winter departures

**Price** does NOT include; travel insurance, lunches or dinner, nor any tour or activities not specifically included.

Lunch can be purchased a stops at .country stores and simple restaurants along the route. Dinnetts can be purchased at the countryside hotels. On the nights in Reykjavik and Akureyri, you'll have a broad range of choices for dinner, from fine dining to casual.

## Prices per person for the Guided Iceland Circle

**January - May 5, 2018**

**Double \$2643**

**Single \$2997**

## Tour Dates

**Departures most weeks throughout the year.**

**Leave US**

Thursday or Monday

**Return to US**

following Friday or Tuesday

*Prices may vary for holiday weeks*



From Europe 1 518 789-4890

Email: [hn@icelandadventure.com](mailto:hn@icelandadventure.com)

[www.IcelandAdventure.com](http://www.IcelandAdventure.com) [www.HorsesNorth.com](http://www.HorsesNorth.com)

P.O. Box 475

Millerton, NY 12546 USA

Toll Free 888 686-6784